

Johnson Building

Iconic Spaces. *Limitless Opportunity.*

JOHNSON 

SLATE

VERACITY

Johnson Building
10 Factory Lane | St. John's, NL
FOR LEASE

JOHNSON

DETAILS - JOHNSON BUILDING

Landlord Legal Name:	SOT NLNB Inc.
Year Built:	1980, Renovated 2019
Estimated Occupancy Date for Tenant Fixturing:	Immediate
Total RSF of Building:	216,076 sq. ft.
Available Spaces:	Contact for more information
Amenities:	Nearby shops and restaurants, Across from Sheraton hotel.
Asking Base Rent:	To be negotiated
Additional Rent Estimate (Incl. Janitorial & Electricity):	\$9.78 sq. ft. (Operating Rent: 2023) \$4.63 sq. ft. (Tax: 2023)
Inducement:	Contact for more information
Parking Ratio and Costs:	2.7 per 1,000 sq.ft. (Included in rental rate)
Signage Opportunity:	Directory board, wayfinding and suite entry signage



Figure 1: Building Entryway

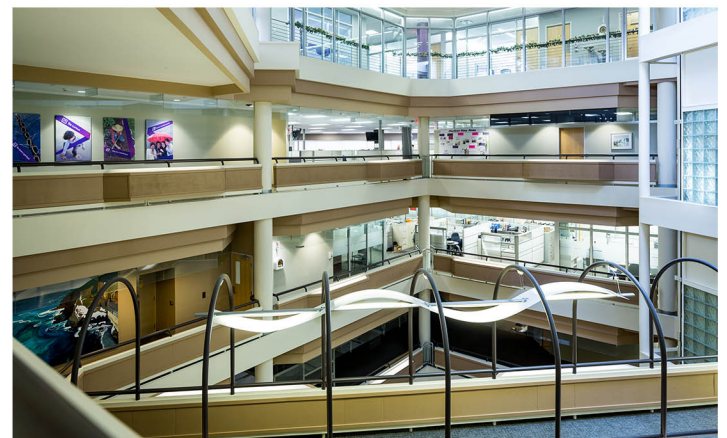
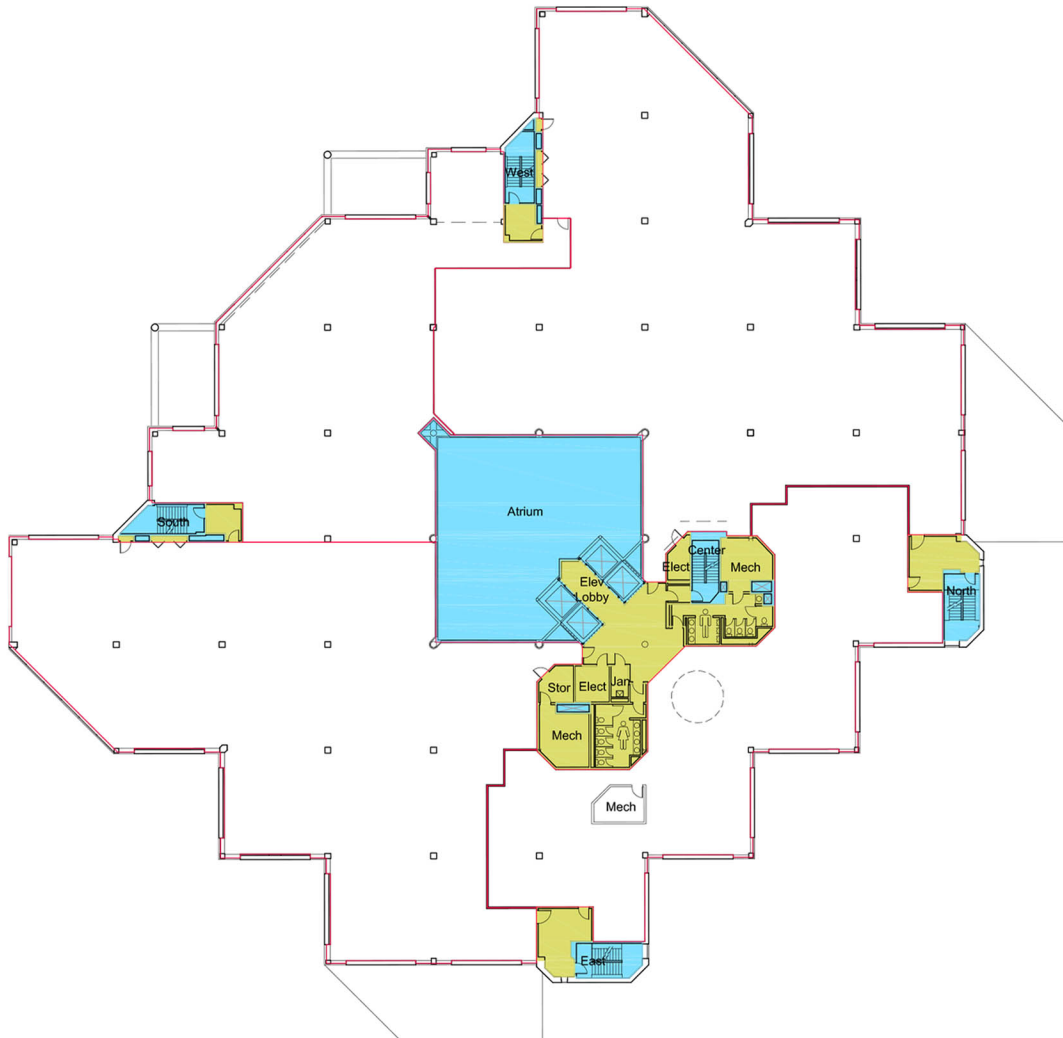


Figure 2: Central Atrium

Johnston Building

Standard Floor Plan



- USABLE AREA
- VERTICAL PENETRATIONS
- FLOOR COMMON AREA
- DEMISING WALL

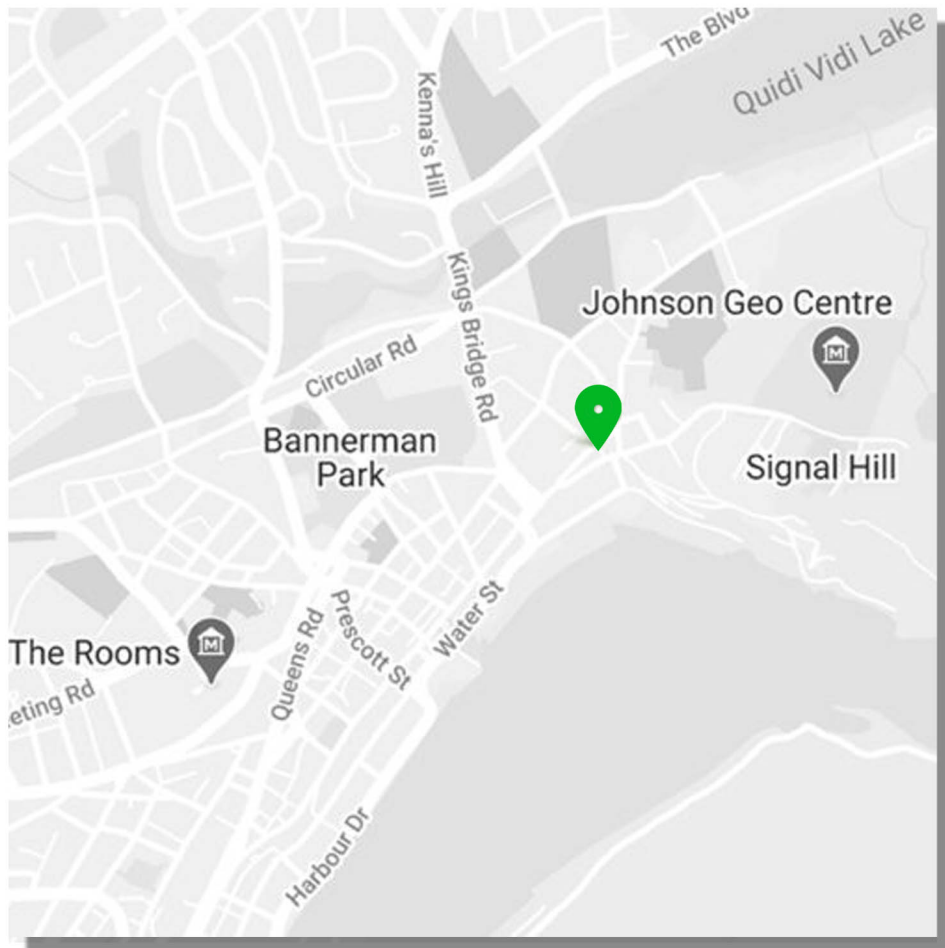
NOTE
 This building has not been site verified by Space Database Inc. Drawings were provided to us by Slate Asset Management LP. Please report any drawing discrepancies or errors to a Space Database client service representative directly:
 Toronto 416-516-8920
 Toll Free 877-516-8920
 Fax 416-516-0316
 Email support@spacedatabase.com
 © 2015 Space Database Inc. All Rights Reserved

10 Factory Lane
 St. John's, NL

AREA SUMMARY

SUITE No.	RENTABLE AREA
FLOORPLATE	38,903 sf
TOTAL	38,903 sf

Iconic Spaces. **Limitless Opportunity.**



VERACITY

Have questions about the property? Want to plan a visit?

Contact us today!

Duncan Whitcomb
+1 (709) 690-4758 (direct)
duncan@veracity-cre.com